

# MONTHLY MEMBERSHIP PROGRESS REPORT

LOCATION MINNESOTA

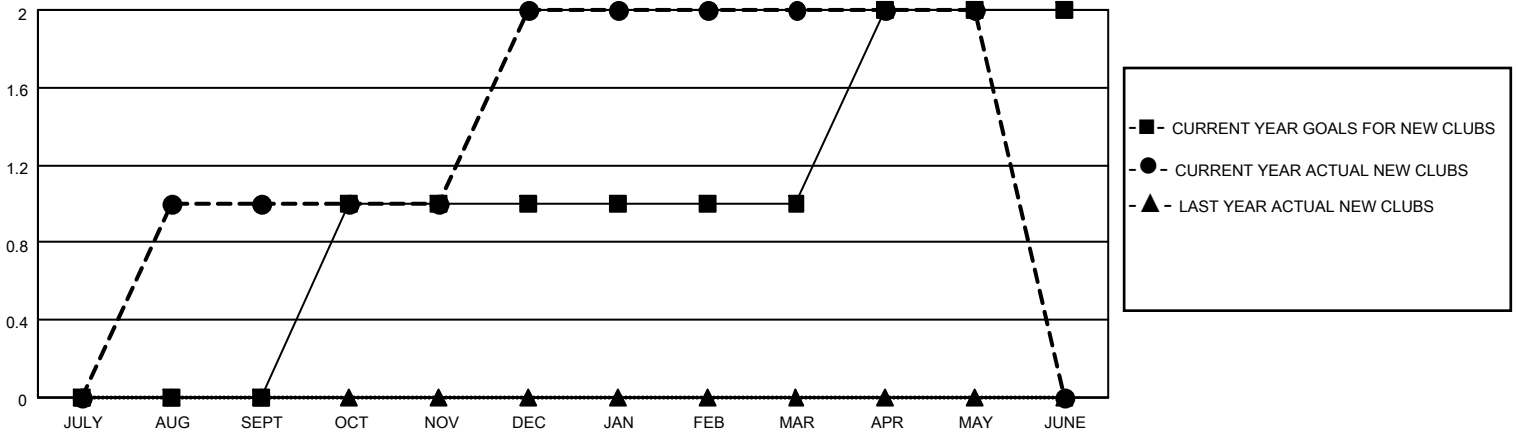
District 5M 9

Results as of: 5/31/2021

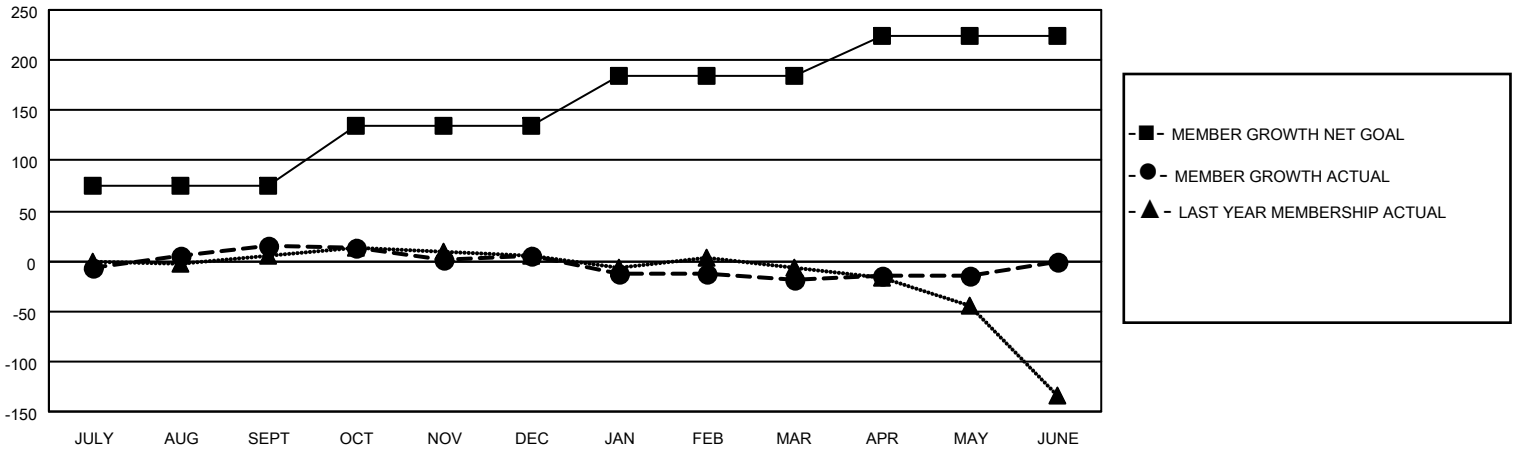
Clubs			
RESULTS FOR 2020-2021			
QUARTER	NEW CLUB GOAL	NEW CLUBS	DROPPED CLUBS
JULY/AUG/SEPT	0	1	0
OCT/NOV/DEC	1	1	1
JAN/FEB/MAR	0	0	0
APR/MAY/JUNE	1	0	0

Members			
RESULTS FOR 2020-2021			
QUARTER	MEMBER GROWTH NET GOAL	MEMBER GROWTH ACTUAL	DROPPED MEMBERS ACTUAL (including transfers)
JULY/AUG/SEPT	75	96	59
OCT/NOV/DEC	60	58	68
JAN/FEB/MAR	50	23	41
APR/MAY/JUNE	40	26	20

**GOALS AND ACTUAL NEW CLUBS CUMULATIVE**



**GOALS AND ACTUAL MEMBERS CUMULATIVE**



<b>DROPPED CLUBS: 1</b>	
<b>DROPPED MEMBERS</b>	
DECEASED	34
CLUB CANCELLED	0
OTHER	154
<b>TOTAL</b>	<b>188</b>

37 CLUBS OF 65 ADDED 1 OR MORE NEW MEMBERS

[CLICK HERE FOR CUMULATIVE MEMBERSHIP DATA](#)

<u>GENDER DISTRIBUTION</u>	
MALE	1,284 (62.91%)
FEMALE	757 (37.09%)

TOTAL FAMILY UNIT MEMBERS	642
FAMILY MEMBERS PAYING HALF DUES	323